

**S A V E
W E S T
C L I F F**

West Cliff

Beloved and Iconic

A Visual Record

HISTORY

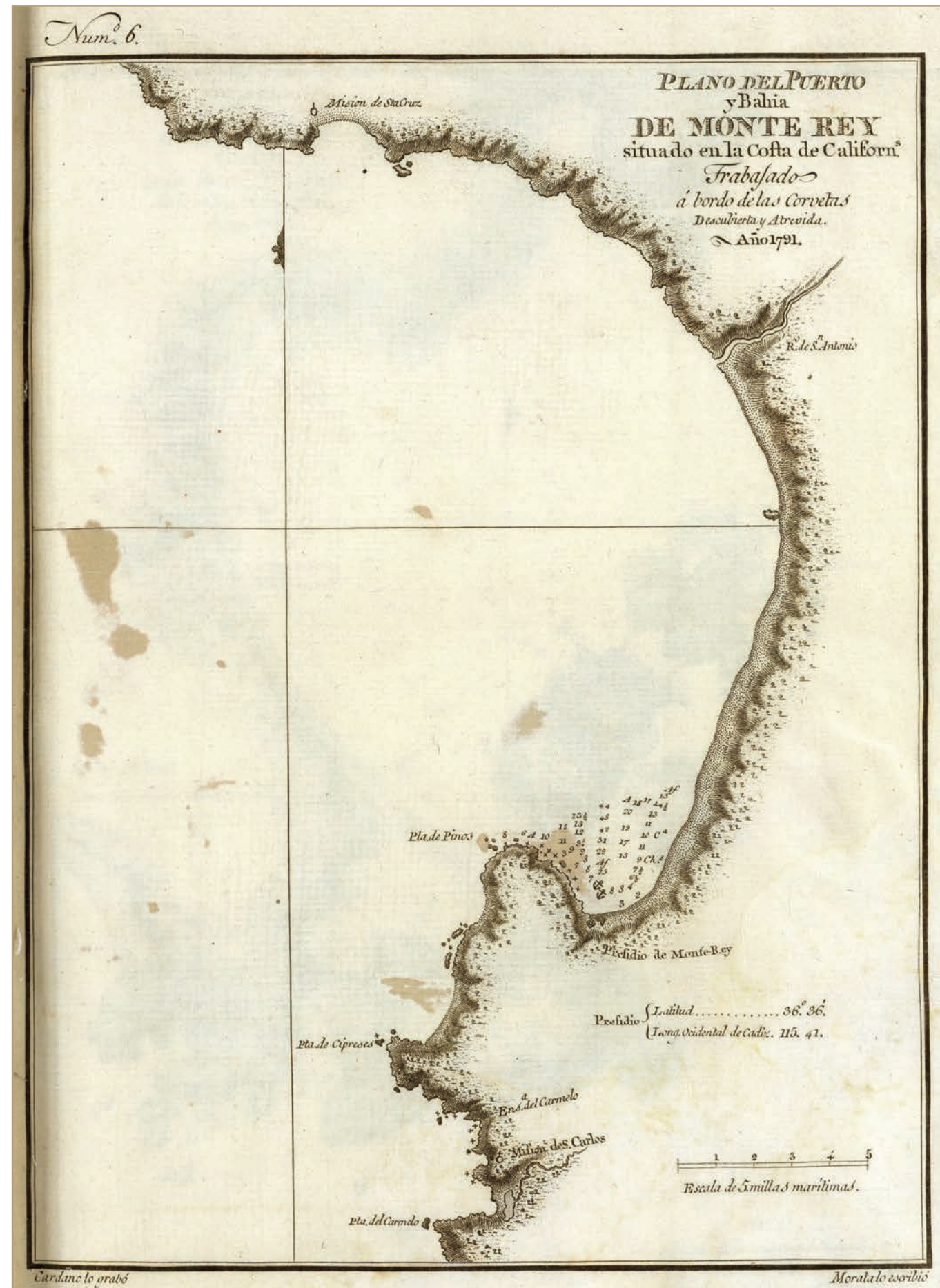
“Those that fail to learn from history are doomed to repeat it.”

- Winston Churchill

“You only know where you are by knowing precisely where you have been and how you got to where you are”

- Wade Davis, The Wayfinders: Why Ancient Wisdom Matters in the Modern World

Galiano and Cayetano Valdes



Source: Espinosa y Tello, J. Plano del Puerto y Bahía De Monte Rey. 1802

1791

U.S. Coastal Survey



Source: U.S. Coast Survey, 1854

1854



Source: University of California Santa Cruz Library

1928



Source: University of California Santa Cruz Library

1931



Source: University of California Santa Cruz Library

1952



Source: University of California Santa Cruz Library

1974



Source: University of California Santa Cruz Library

1982



Source: University of California Santa Cruz Library

1989



Source: University of California Santa Cruz Library

2003



Source: Google Earth

2021

JAN. 5TH, 2023 STORM

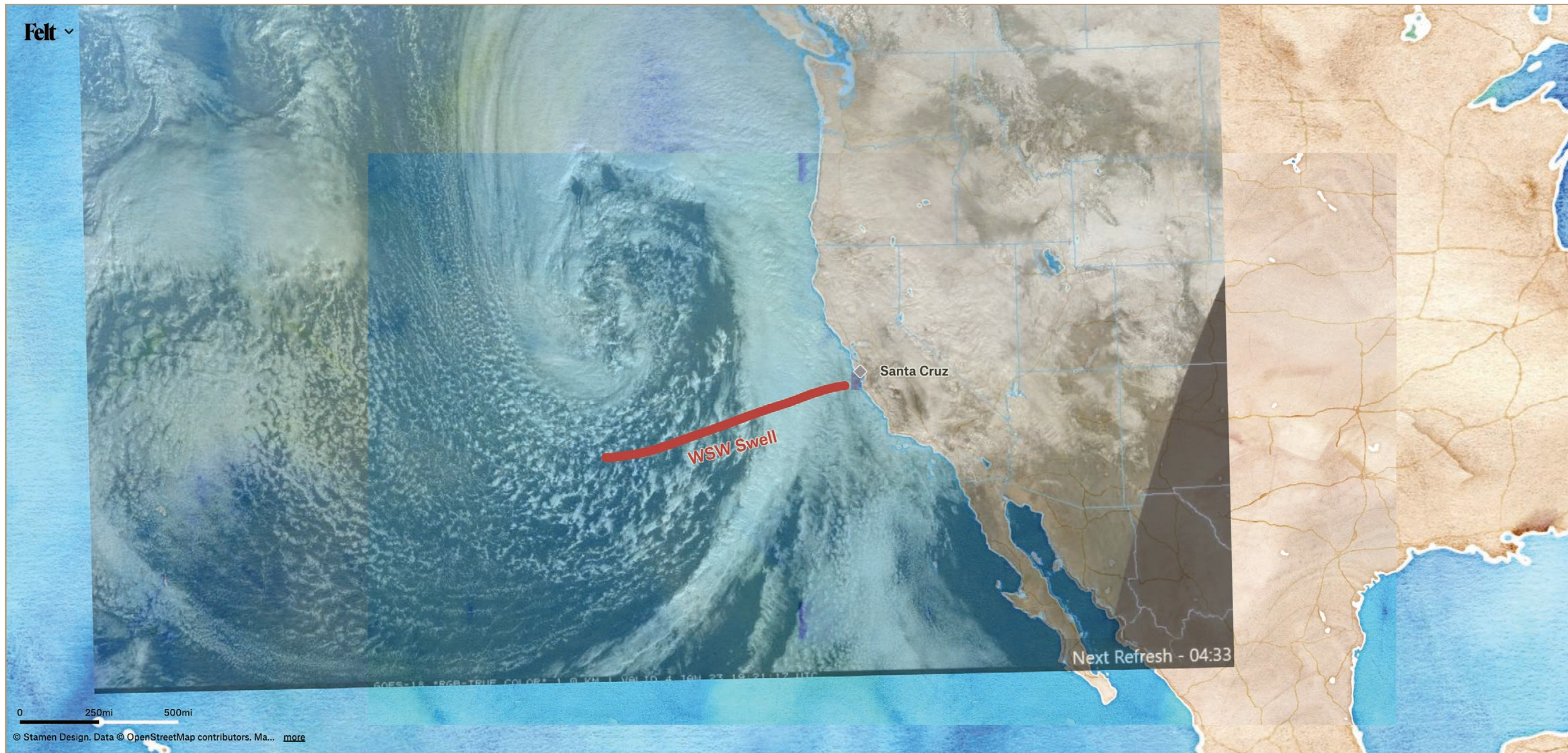




Image by Gary Griggs



Image by Gary Griggs



Image by savewestcliff.com/gallery

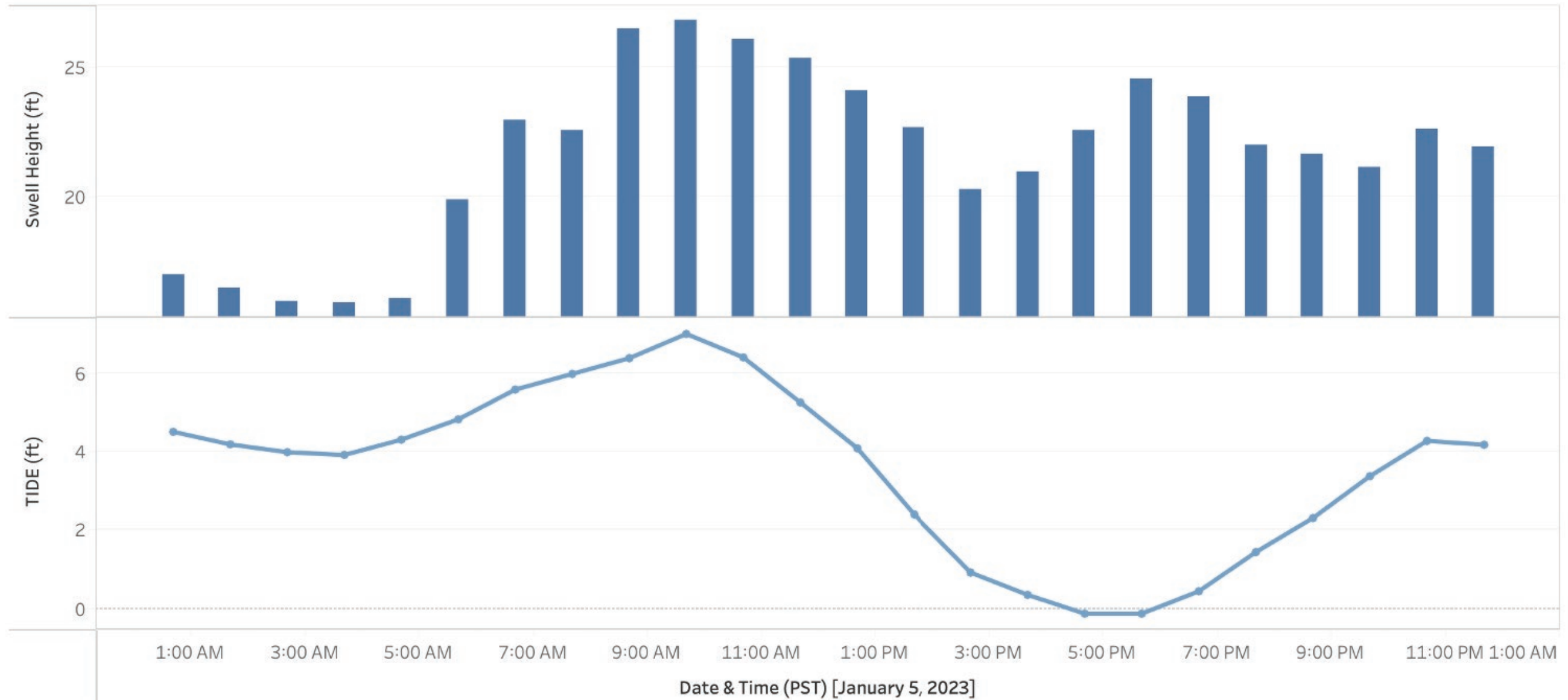


Image by savewestcliff.com/gallery



Image by savewestcliff.com/gallery

Jan 5th Storm Hour by Hour

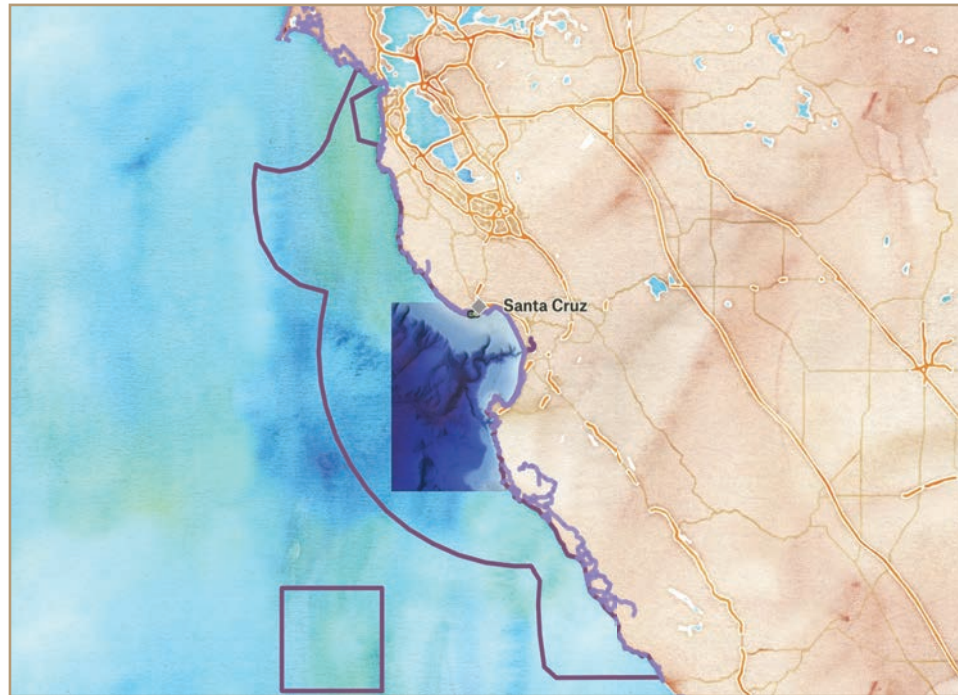


Note: Peak Swell Height occurred at the same time as High Tide

Source NOAA (Monterey Buoy and Tide Gauge).



Monterey Bay National Marine Sanctuary and California Coastal Trail



Source: Stamen Design Monterey Bay National Marine Sanctuary

Santa Cruz County Districts



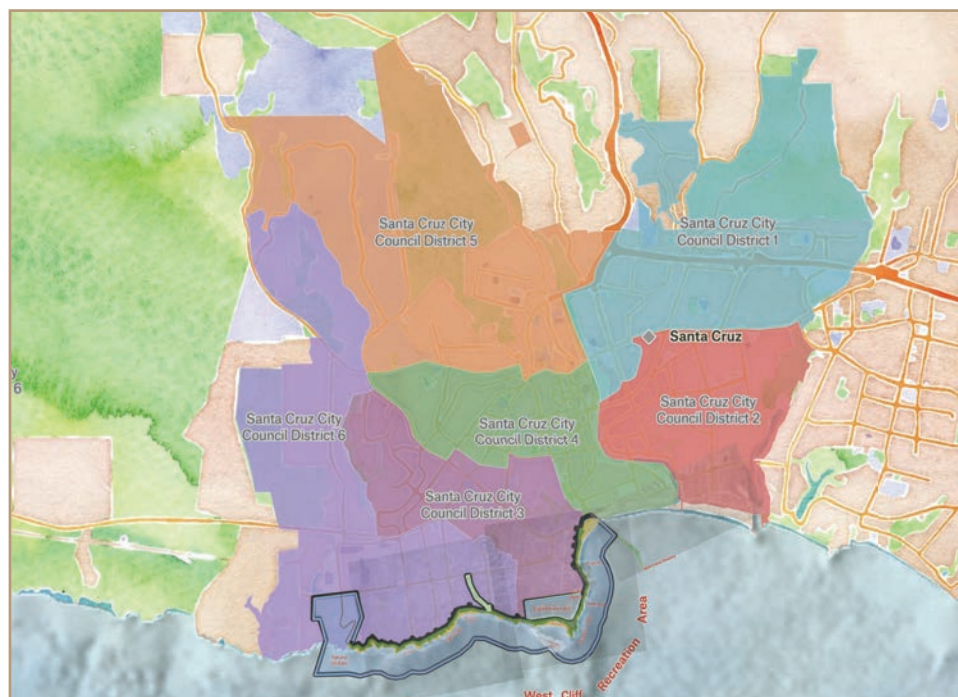
Source: Stamen Design, City of Santa Cruz

California Coastal Zone



Source: Stamen Design, California Coastal Commission, Santa Cruz World Surfing Reserve

City of Santa Cruz Districts



Source: Stamen Design, USGS United States Geological Survey

Vehicle Access



Source: Stamen Design, California Coastal Trail

Recreation Tracks



Source: Stamen Design, California Coastal Trail



Image by Al Ramadan



Image by Shmuel Thaler / Santa Cruz Sentinel



Image by ChaChi



Image by Shmuel Thaler / Santa Cruz Sentinel

We Are Inspired by Other Communities

LA River Master Plan Framework

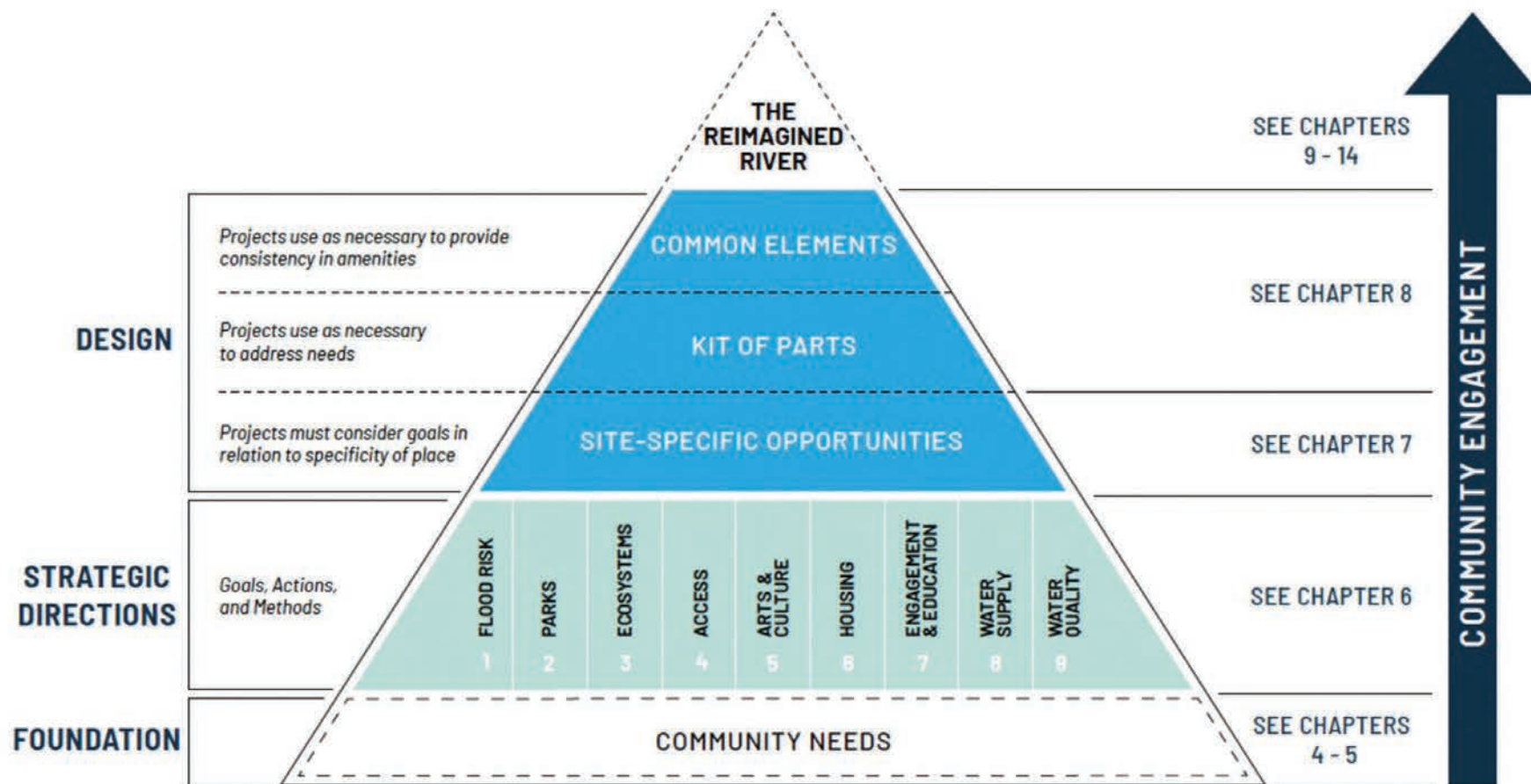


Figure 15. The LA River Master Plan is a goal-driven framework built around a robust data-based methodology to assess community needs. All strategic directions and design opportunities are informed by community needs and site opportunities to support the vision for the reimagined river.

HIGH LINE

<https://www.thehighline.org/>



**LA RIVER
MASTER PLAN**

<https://larivermasterplan.org/>

LANDS END

<https://www.nps.gov/goga/learn/historyculture/vestiges-lands-end-trail.htm>

Inspiration continues...

Capitola Beach, California

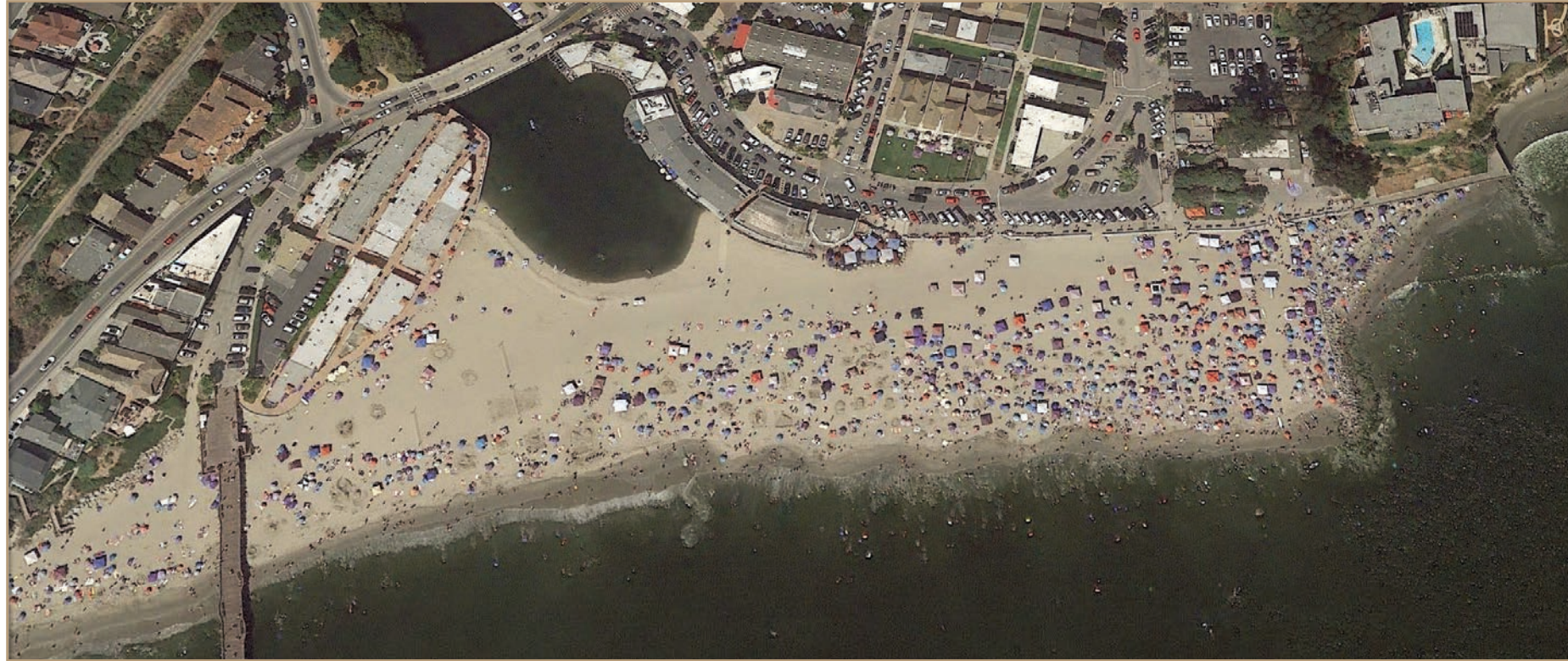


Image by Google Earth

San Lorenzo Rivermouth/ Seabright State Beach, Santa Cruz, California



Image by ChaChi

Superbank, Gold Coast, Australia



Image Source Unknown

Noosa Heads, Queensland, Australia

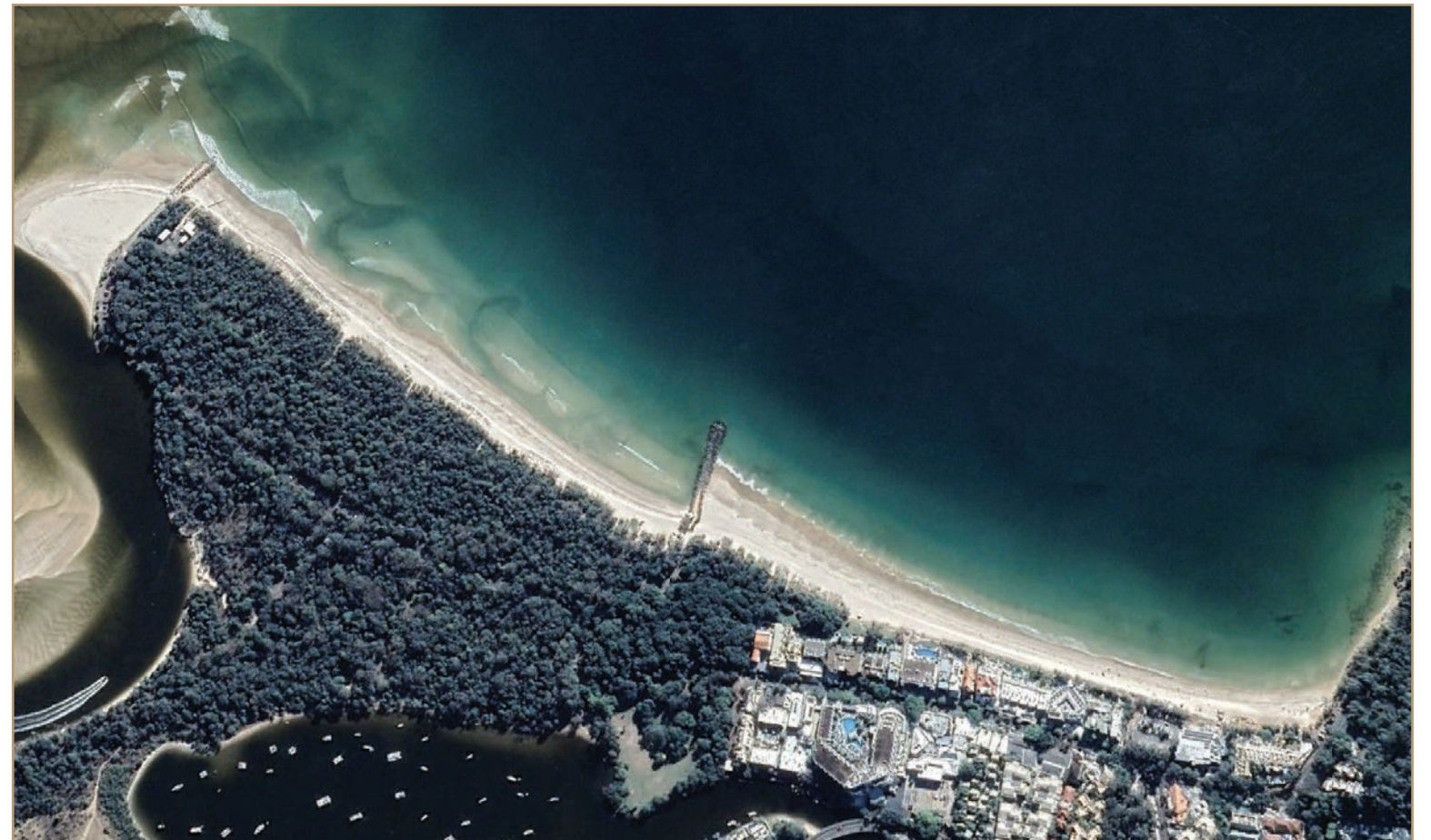


Image by Google Earth

Special Thanks to:

Eric Rodenbeck & Alan McConchie @ Stamen Design

Angelika Frebert. Aerial Digital and Luisa Haddad, Special Collections UCSC Library

Gary Griggs UCSC

Curt Storlazzi USGS

Dave Revell, Craig Jones and Matt Jamieson at Integral Consulting

Laura Schmidt, Richard Westfell, and Erika Smart from City of Santa Cruz

The California Coastal Trail

The Save West Cliff Executive Committee. Al, Hilary, Nik, Bob, Shaun, Donna and Gary

Carrie Drew from The Drew Creative

Also acknowledging our partners in the Mission:

Matt Huffaker (City Manager at City of Santa Cruz)

Shebreh Kalantri-Johnson (Council member at City of Santa Cruz, Santa Cruz City Schools Committee, Santa Cruz Metropolitan Transit District Board)

Renee Golder (Council member City of Santa Cruz, Principal of Bay View Elementary School)

West Cliff Neighbors

Save the Waves Coalition <https://www.savethewaves.org>

Santa Cruz World Surfing Reserve <http://www.savethewaves.org/santa-cruz/>

Monterey Bay National Marine Sanctuary Foundation <https://montereybayfoundation.org>

Santa Cruz Surfing Club Preservation Society

Santa Cruz Surf History Museum

Santa Cruz Works <https://www.santacruzworks.org>

Dream Inn <https://www.dreaminnsantacruz.com>

Steamer Lane Supply <http://steamerlanesc.com>

Santa Cruz Board Riders <http://westcoastboardriders.com>

Please Join Us
#savewestcliff
savewestcliff.com



Image by Hilary Bryant